

June 24, 2014

Exterior Color Selections
Eutaw Construction – Part 2
Gluckstadt, Mississippi
JOrr# 14014.01

EXTERIOR WINDOWS/ENTRANCE DOORS	Clear Anodized Aluminum
EXTERIOR HOLLOW METAL	Painted to match metal wall panels
OVERHEAD DOOR	Painted to match metal wall panels
EXTERIOR GLASS (vision)	1" Insulated, Light Gray Color
BRICK VENEER (Field)	Boral Bricks "Madison"
BRICK VENEER (Accent)	Block USA Sooth Face "Portico Dust" Size 8"x2½"x4"
CMU	Block USA Split Face "Portico Dust" Size 16"x8"x4"
MORTAR	Standard Gray
METAL ROOF	Gulf States "Pearl Gray"
WALL PANELS	Gulf States "Pearl Gray"
DOWNSPOUTS & TRIM	Gulf States "Pearl Gray"
CANVAS CANOPY	Sunbrella "Silver" 4651, 26 inch width Sunbrella "Blue Tweed" 4653, 26 inch width Awnings shall be sized as follows: Width = 130 inches – 5 color bands Width = 78 inches – 3 color bands
EXTERIOR LIGHT FIXTURES & POLES	Clear anodized aluminum

CANTON

082E19-001/01.01
MEXIMISSISSIPPI INC
082E19-001/01.02
MEXIMISSISSIPPI INC

082E-21
01/03/00
ATTSOUTH LLC

C1

082E-21-01916-01B
CANTON MISSISSIPPI
PROPERTY SERVICES LLC

082E-21-01724-00
EAST GROUP
PROPERTIES LP

082E-21-01724-00
EAST GROUP
PROPERTIES LP

082E-21-01701-00
MADISON COUNTY
REGIONAL DEVELOP

082E-21-01705-00
MADISON COUNTY
REGIONAL DEVELOP

082E-22-00709-01
MADISON COUNTY
SEWER/WATER AUTH

082E-22-00609-00
GRIMM ENTERPRISES
LLC

082E-22-00902-00
CROWNE ENTERPRISES INC

I2

082E-22-00900-00
FAUNE O AMBROSON
AUTOMOTIVE SEAT

082E-22-00901-00
WATKINS STEEL
MISSISSIPPI LLC

082E-22-00904-00
STEEL
TECHNOLOGIES LLC
082E-22-00903-00
STEEL
TECHNOLOGIES LLC

A1

082E-15
002/01/00
SAUBERKAGENSEN

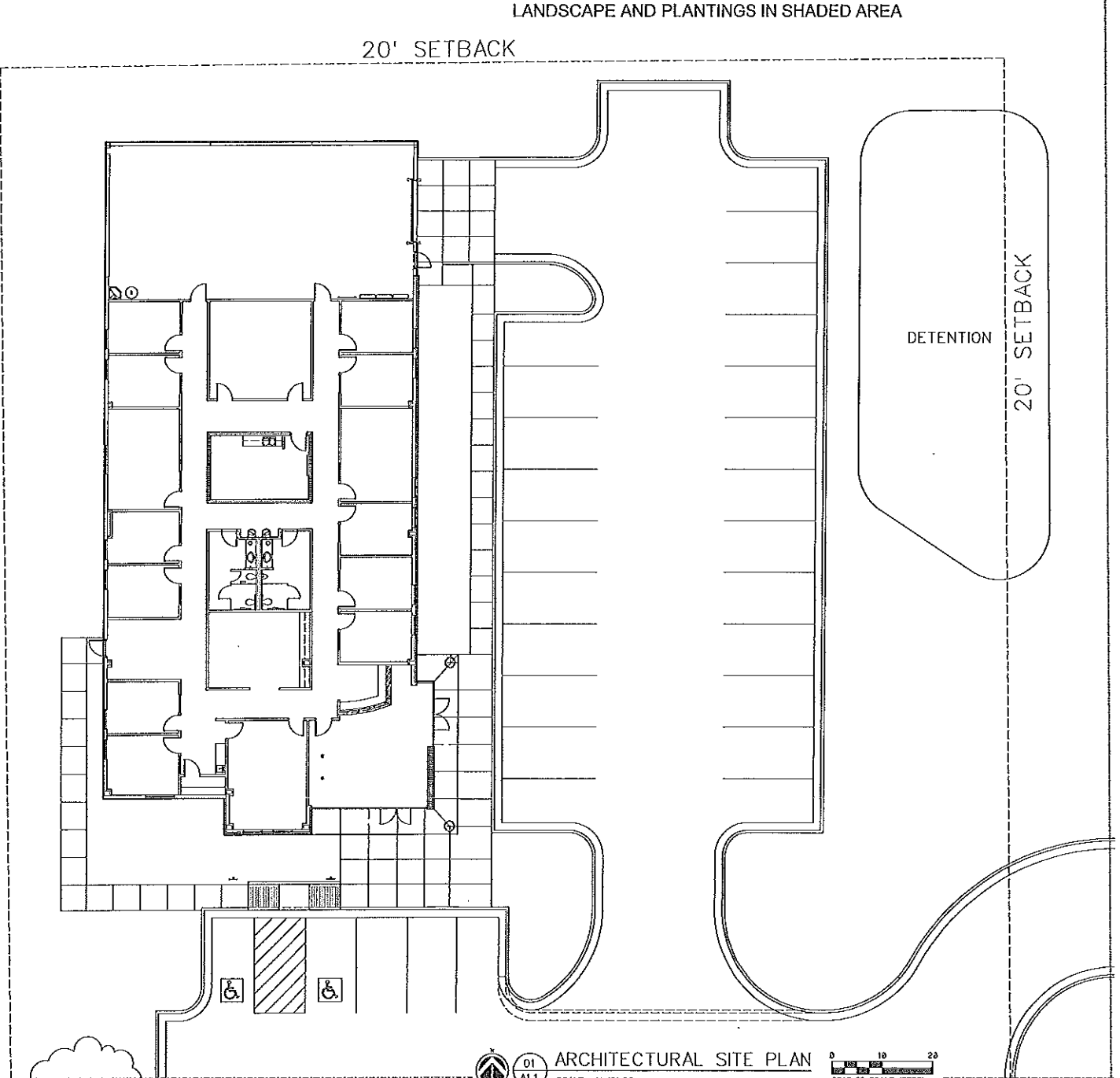
082E-15-002/01/00
SAUBERKAGENSEN

G2

082E-15
01/01/00
082E-15
01/01/00
082E-15
01/01/00

155

155



Joseph
Dorr aia
Architecture PA
127 West Peace Street
Canton, Mississippi
601-852-0723
jorade

Phase 2 Expansion
Madison County, Mississippi

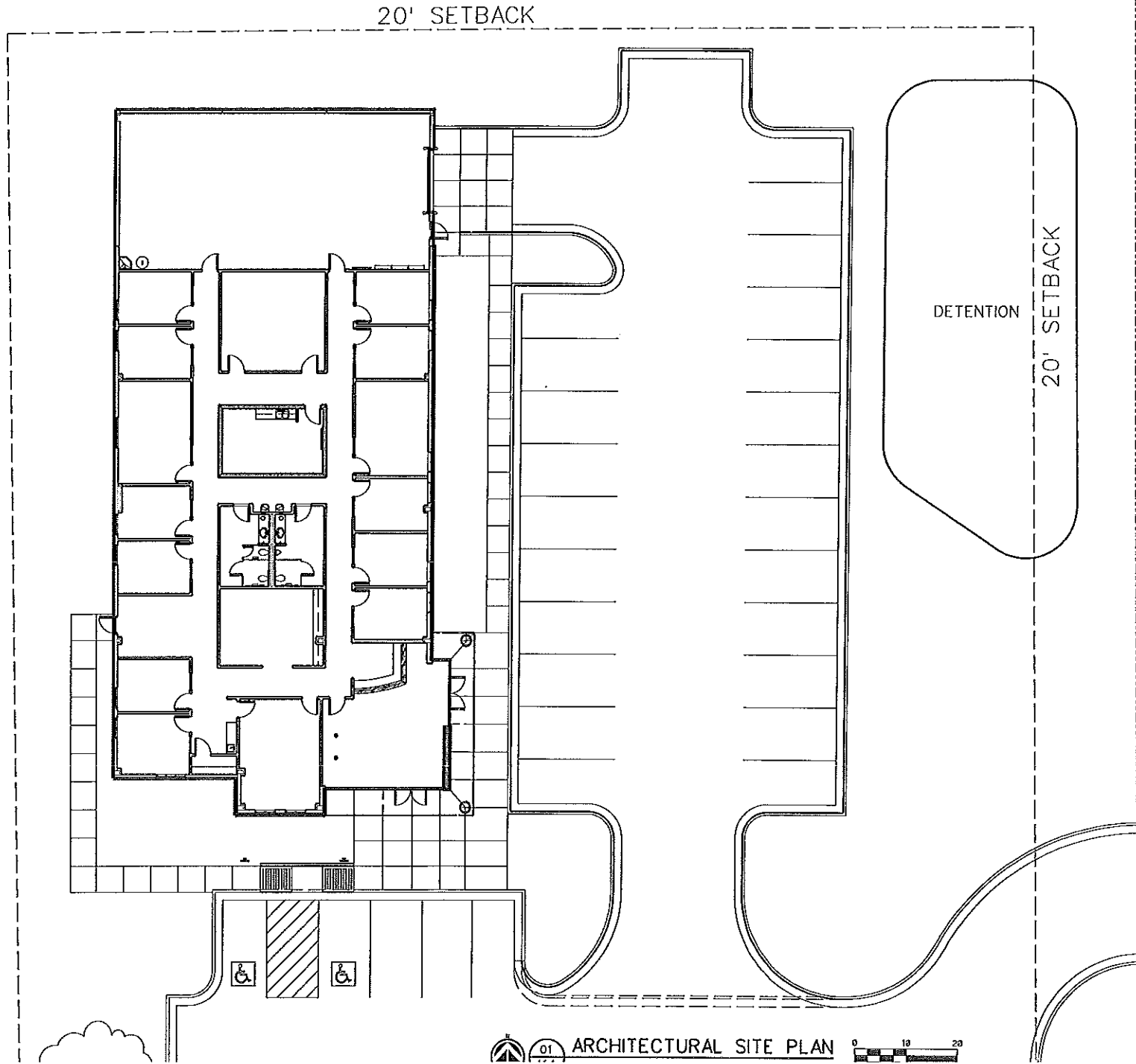
EUTAW
CONSTRUCTION COMPANY, INC.

PROJECT: 14206
DATE: May 15, 2014
REV:

A1.1

01 ARCHITECTURAL SITE PLAN
A1.1 SCALE 1"=10'-0"

0 10 20
GRAPHIC SCALE (FEET)

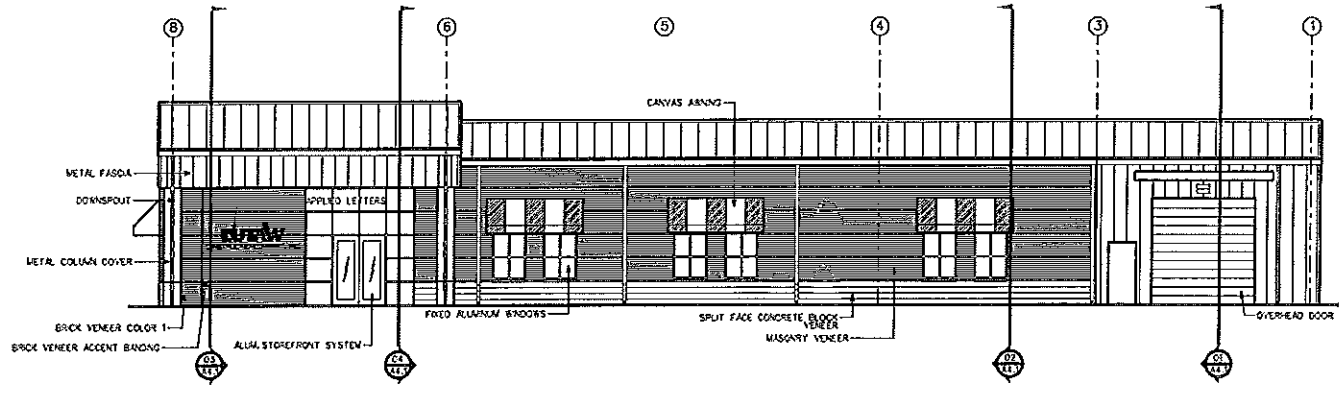


Phase 2 Expansion
Madison County, Mississippi

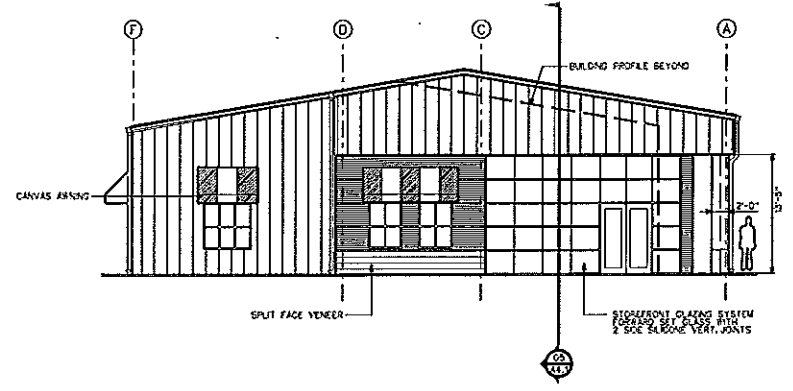


PROJECT: 14006
DATE: May 15, 2014
REV:

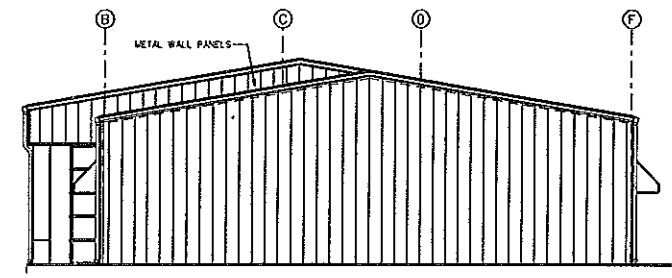
A1 1



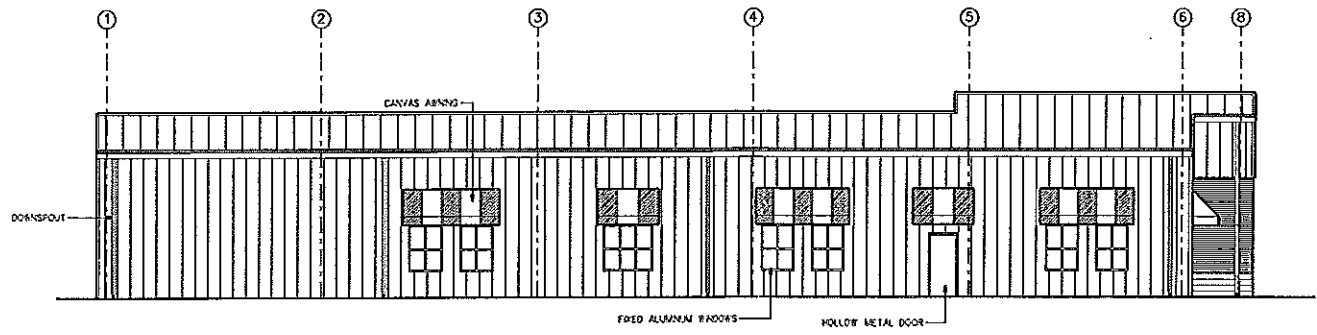
01 EAST ELEVATION
A3.1 SCALE 1/8" = 1'-0"



02 SOUTH ELEVATION
A3.1 SCALE 1/8" = 1'-0"



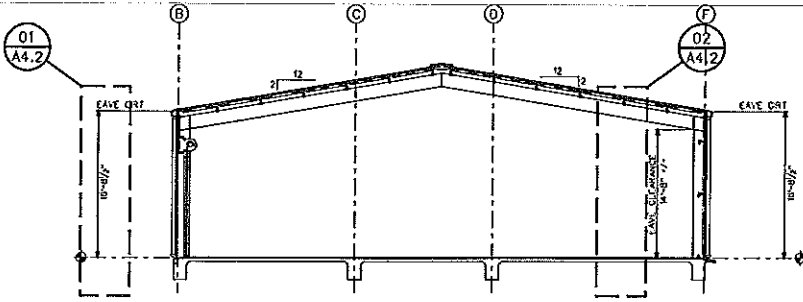
03 NORTH ELEVATION
A3.1 SCALE 1/8" = 1'-0"



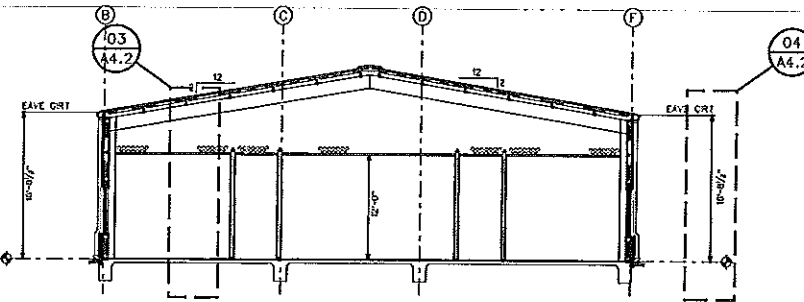
04 WEST ELEVATION
A3.1 SCALE 1/8" = 1'-0"

Phase 2 Expansion
Madison County, Mississippi

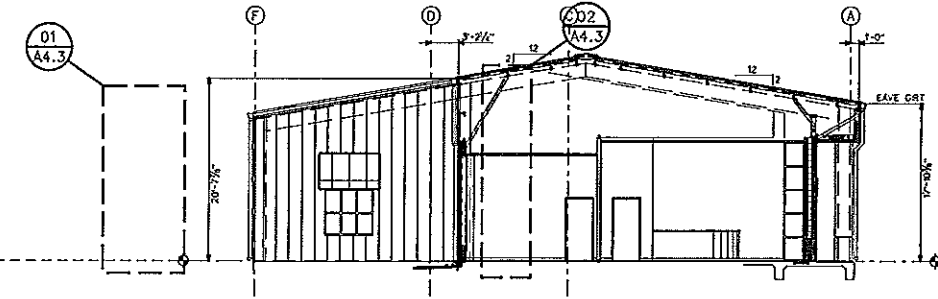




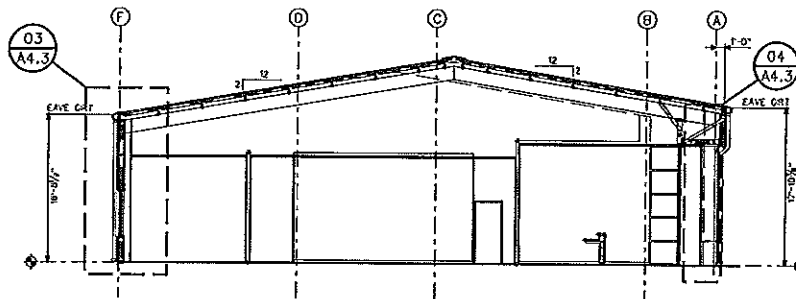
01
A4.2
BUILDING SECTION
SCALE 1/8" = 1'-0"



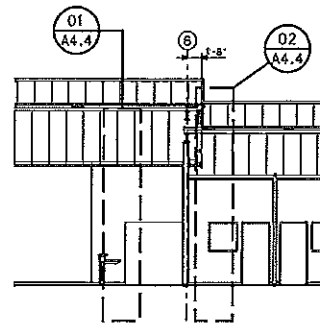
02
A4.2
BUILDING SECTION
SCALE 1/8" = 1'-0"



03
A4.3
BUILDING SECTION
SCALE 1/8" = 1'-0"



04
A4.3
BUILDING SECTION
SCALE 1/8" = 1'-0"



05
A4.4
BUILDING SECTION
SCALE 1/8" = 1'-0"

Joseph
Dorr aia
Architecture PA
137 West Peach Street
Canton, Mississippi
601.883.0112
jdh@aia.com

June 15, 2014

Phase 2 Expansion
Madison County, Mississippi

EUTAW
CONSTRUCTION COMPANY, INC.

PROJECT: 14006
DATE: May 15, 2014
REV:

A4.1



Eutaw Construction
Madison County, MS

Joseph Orr
Architect

